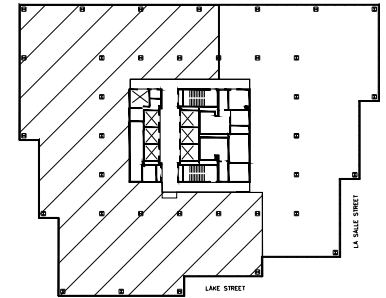


20TH FLOOR

Suite 2000 - 14,481 rsf



200 NORTH LASALLE



For leasing information, please contact:

BENJAMIN CLEVELAND
312.819.1236
ben.cleveland@cushwake.com

MARK GUNDERSON
312.819.1263
mgunderson@cushwake.com

**CUSHMAN &
WAKEFIELD**

onni
group

onni.com

©2015 Onni Group, Inc. This information has been obtained from sources believed reliable. We have not verified it and make no guarantee, warranty, or representation about it. Any projections, opinions, assumptions, or estimates used are for example only and do not represent the current or future performance of the property. You and your advisors should conduct a careful, independent investigation of the property to determine to your satisfaction the suitability of the property for your needs.

