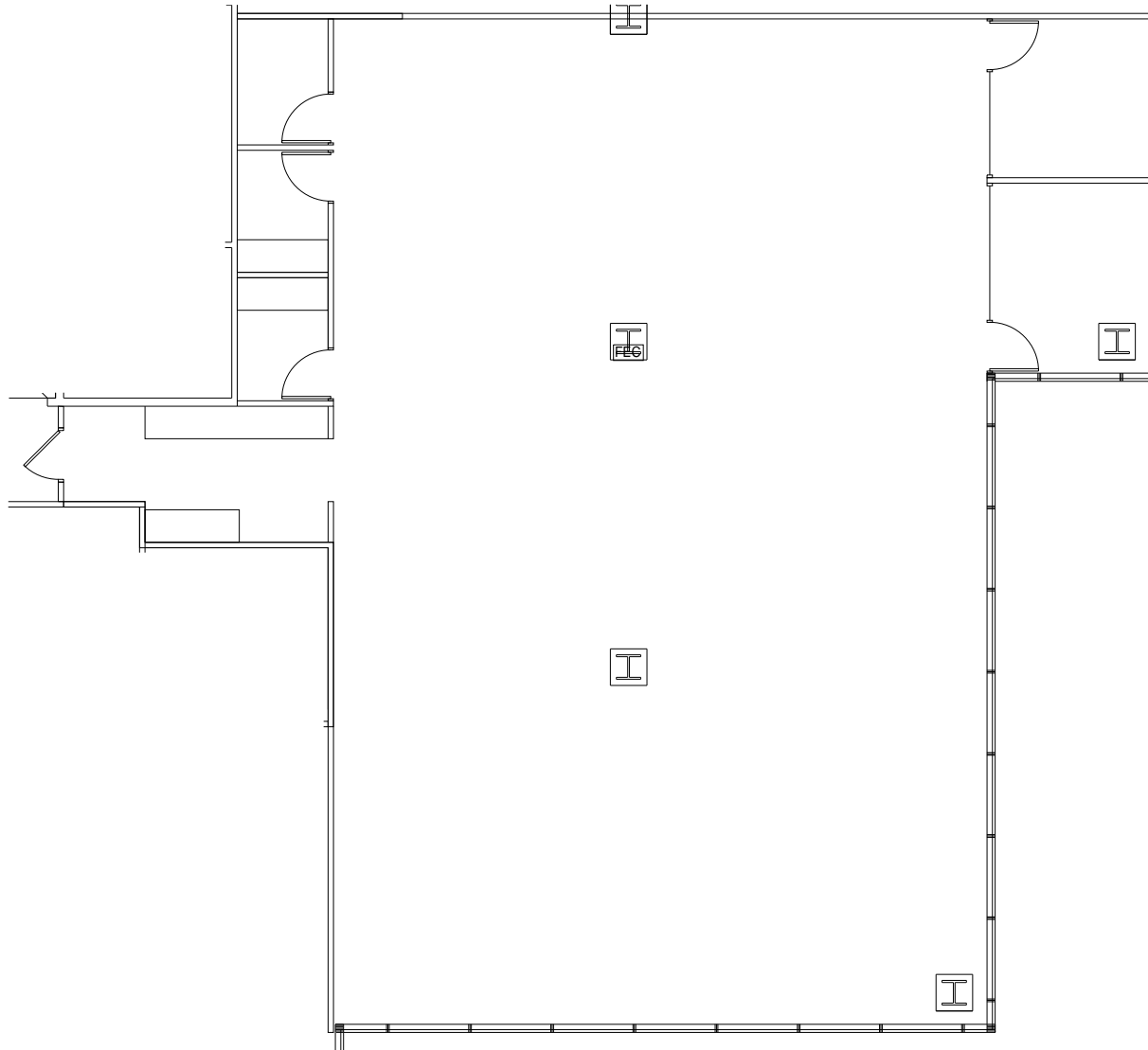
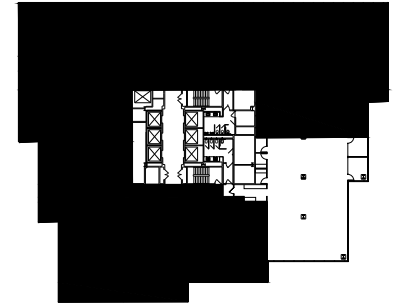


# 26TH FLOOR

## SUITE 2630 - 3,585 RSF



200  
NORTH  
LASALLE



For leasing information, please contact:

BENJAMIN CLEVELAND  
312.819.1236  
[ben.cleveland@cushwake.com](mailto:ben.cleveland@cushwake.com)

MARK GUNDERSON  
312.819.1263  
[mgunderson@cushwake.com](mailto:mgunderson@cushwake.com)



CUSHMAN &  
WAKEFIELD



onni<sup>®</sup>  
group

[onni.com](http://onni.com)

©2015 Onni Group, Inc. This information has been obtained from sources believed reliable. We have not verified it and make no guarantee, warranty, or representation about it. Any projections, opinions, assumptions, or estimates used are for example only and do not represent the current or future performance of the property. You and your advisors should conduct a careful, independent investigation of the property to determine to your satisfaction the suitability of the property for your needs.

